



# La Habra City School District

## Measure "O" – Bond Oversight Committee Update

October 15, 2014

# Bond Oversight Committee Members

As part of Measure “O”, State law requires the appointment of a 7-member Citizens’ Oversight Committee and annual audits to ensure money is used only for voter approved school improvements and repairs and not for salaries, administration and overhead.

On September 25, 2014, the La Habra City School District Board of Trustees approved Eileen Okazaki and Vincent Sinohui to serve on the Citizens’ Oversight Committee. Ms. Avila is no longer available to serve on the committee due to personal reasons and Mr. Tello has moved out of the area.

## **Current Committee Members**

Dan Casey - Senior Citizen Representative

Morrison Clements - Member at Large

Mark Lawton - Representative of Taxpayer Organization

Anita Lomelli - Parent or Guardian of enrolled student in the District

Nancy Landa - Parent or Guardian of enrolled student in the District, who is active in a parent-teacher organization

Eileen Okazaki - Member at Large

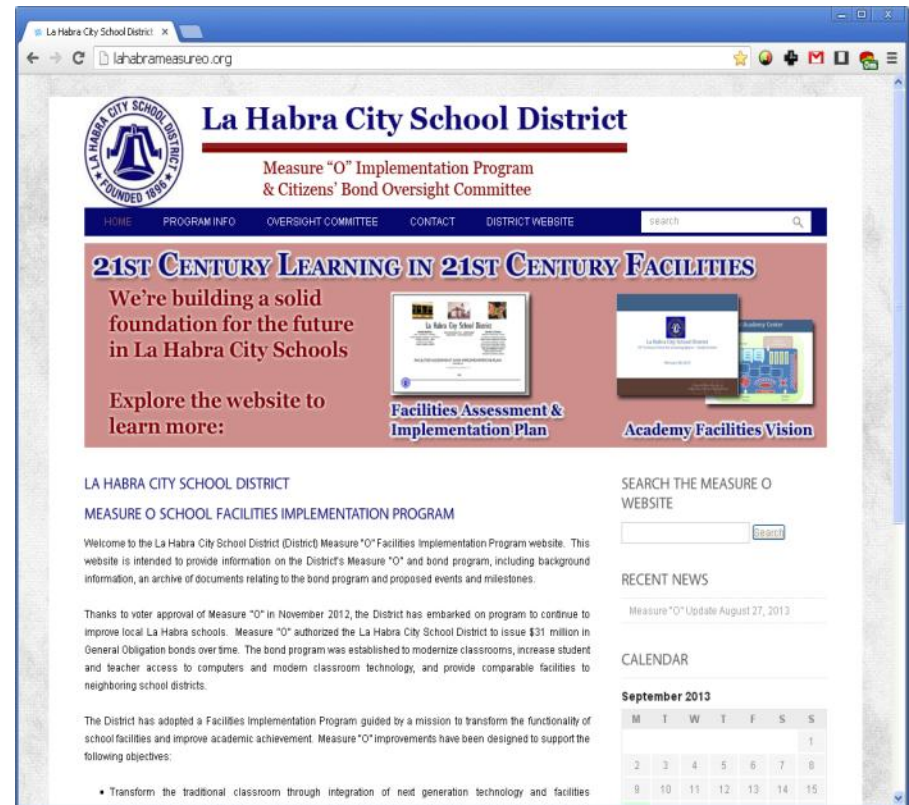
Vincent Sinohui - Business Representative

# Measure “O” Recap

- In July 2012, the Board adopted a Facilities Assessment & Implementation plan that identified a facilities improvement strategy over four phases beginning in 2013 and ending in 2025
- The Plan prescribed four project categories to be implemented during the first phase of program implementation, between 2013-2016:
  1. Academy upgrades at Washington and Imperial middle schools
  2. Technology upgrades, including mobile computing devices, wireless network enhancements, and modern telephone systems
  3. Roofing repair and replacement at critical locations
  4. Improved energy efficiency and deferred maintenance
- In November 2012, La Habra voters approved funding this plan through Measure “O”, providing \$31 million in General Obligation bond authorization over time toward planned improvements
- Implementation planning began with Projects 1 and 2 immediately following the bond’s passage; a bid for Project 3 was awarded in May 2013 and has been completed. Project 4 is currently completing the bidding process and is scheduled to begin work in November 2014
- This presentation provides an overview of progress to date on implementing these Measure “O” improvements

# Measure “O” Website

- The Measure “O” website is available as a community resource for information about the facilities implementation program
- Visitors can peruse information on project updates, view photos of construction activity, or learn about the Facilities Assessment & Implementation Plan that guides the process
- A section also provides resources on the Citizens’ Oversight Committee, including presentations, expenditure reports, and meeting minutes, in compliance with Prop. 39 requirements



<http://www.LaHabraMeasureO.org>

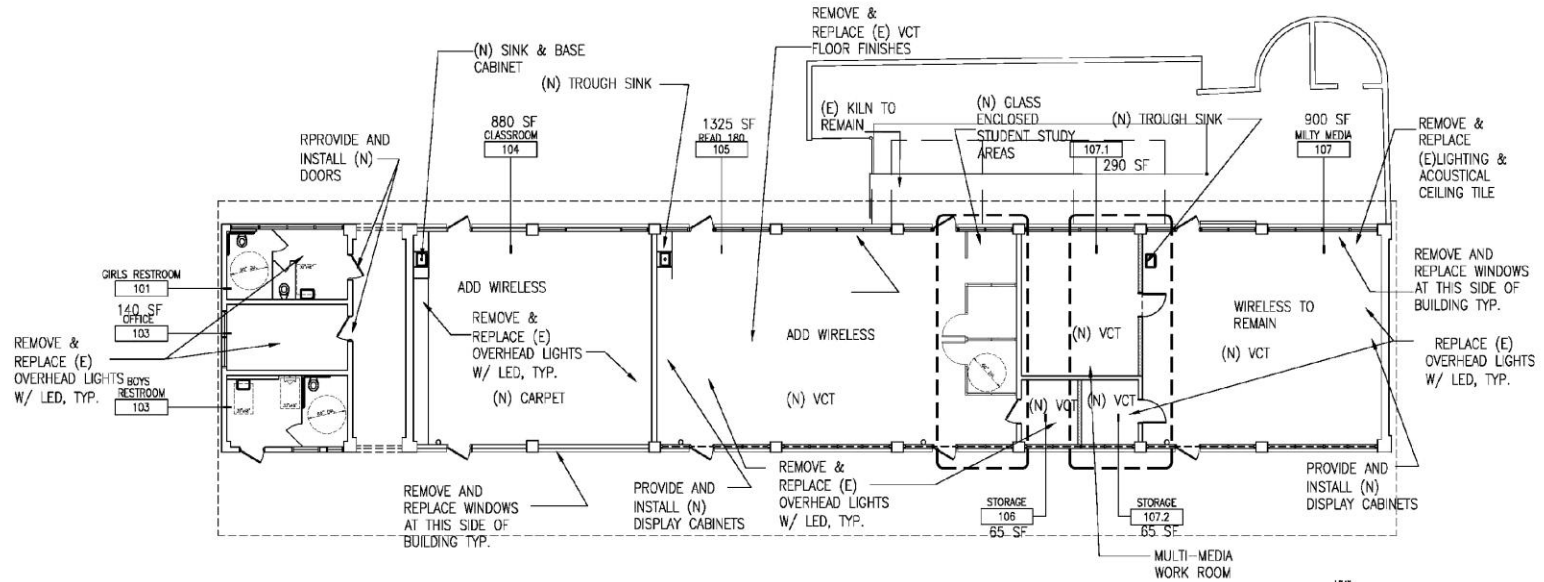
# Phase 1 Projects

- Phase 1 includes a \$7.1 million facility implementation program funding improvements to Imperial and Washington Middle schools and Districtwide improvements including roofing replacements, technology, deferred maintenance, and energy efficiency
- Components that did not require approval by the Division of the State Architect (DSA) have been completed:
  - iPads – distributed to over 2000 students and teachers
  - Electronic marquees (signs) – completed in February of 2014
  - Courtyard safety improvements at Imperial Middle – completed in February of 2014
  - Selection and order of modern furnishings
- Roofing repairs/replacements at 5 schools sites have been completed
- Modernization efforts for Washington and Imperial Middle schools are currently in the bidding process and are anticipated to begin construction in November 2014

# Project 1: Middle School Modernizations

- Designs for modernization improvements at Washington and Imperial Middle schools have been completed by TDM architects and accepted by the Division of the State Architect (DSA). Improvements include:
  - Modernization of the libraries on both campuses with improved finishes, lighting, and furniture
  - Upgraded science labs
  - Multiple modernized classrooms to provide 21<sup>st</sup> Century Learning environments to the students and teachers
  - New 21<sup>st</sup> Century furniture for existing classroom spaces
- Modernization efforts will be completed in several phases to minimize disruption to students and teachers and is anticipated to be completed in the fall of 2015

# Washington Middle School Building E Modernization



REMOVE AND REPLACE (E) ROOFTOP PACKAGE UNITS AT EACH CLASSROOM (TYP) PATCH ROOFING

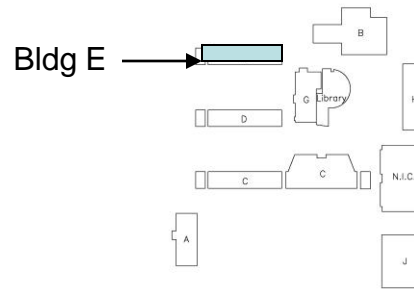
PROVIDE AND INSTALL NEW BLINDS AT NEW WINDOWS

PREP AND REPAINT ALL INTERIORS

**1 PROPOSED PLAN**  
A201 REF. SCALE: 1/8"=1'-0"



NOTE: MODIFY MECH. UNIT TO PROVIDE SUPPLY & RETURN



KEY PLAN



L:\ES\Shell\A201\_Floor plan.dwg, 5/10/2013 8:01:23 PM, Adhbe PDF

**TDM** architects, inc.  
930 Colorado Boulevard  
Los Angeles, CA 90041  
TEL: (323) 254-9200  
www.tdmarch.com

# Washington Middle School Classroom Modernization at Bldg J



New LED lighting

New Heating Ventilation and Air Conditioning

Repaint Interior

New Classroom Furniture

New White Boards

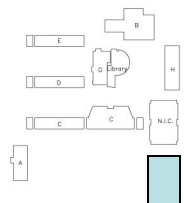
New Acoustical Wall & Ceiling Panels

New Tack Boards

New Carpet



Modernization typical at all classrooms this building



KEY PLAN

**TDM** architects, inc.

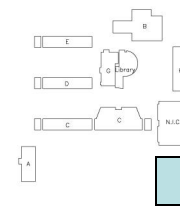
930 Colorado Boulevard  
Los Angeles, CA 90041  
TEL: (323) 254-9200  
www.tdmarch.com



# Washington Middle School Classroom Modernization at Bldg J



Modernization typical at all classrooms this building



KEY PLAN

**TDM** architects, inc.

930 Colorado Boulevard  
Los Angeles, CA 90041  
TEL: (323) 254-9200  
www.tdmarch.com

# Master Budget Overview

Project	Measure "O" G.O. Bond (Fund 24)	Measure "K" G.O. Bond (Funds 21-23)	County School Facilities (Fund 35)	Total
<b>Imperial Middle School</b>				
Science Labs	\$156,477	\$0	\$0	\$156,477
Campus Entry	\$142,051	\$0	\$0	\$142,051
Academy Center	\$726,685	\$0	\$0	\$726,685
Classroom Improvements	\$76,223	\$0	\$0	\$76,223
Safety & Courtyards	\$297,029	\$0	\$0	\$297,029
Total	\$1,398,465	\$0	\$0	\$1,398,465
<b>Washington Middle School</b>				
Drop-Off	\$103,457	\$0	\$0	\$103,457
Classroom Improvements	\$416,883	\$0	\$0	\$416,883
Academy Center	\$743,637	\$0	\$0	\$743,637
Site Outdoor Lighting	\$45,504	\$0	\$0	\$45,504
Campus Entry	\$136,866	\$0	\$0	\$136,866
Kitchen Lighting	\$12,520	\$0	\$0	\$12,520
Total	\$1,458,867	\$0	\$0	\$1,458,867
<b>Districtwide</b>				
Technology				
Equipment	\$842,952	\$0	\$0	\$842,952
Wiring	\$280,000	\$0	\$0	\$280,000
Lease payments	\$634,000	\$0	\$0	\$634,000
Roofing	\$458,270	\$404,898	\$0	\$863,168
Deferred Maintenance & Energy Management	\$614,535	\$0	\$464,399	\$1,078,935
Total	\$2,829,757	\$404,898	\$464,399	\$3,699,054
<b>Program Reserve</b>				
Program Reserve	\$588,336	\$0	\$0	\$588,336
Total	\$588,336	\$0	\$0	\$588,336
<b>GRAND TOTAL</b>	<b>\$6,275,425</b>	<b>\$404,898</b>	<b>\$464,399</b>	<b>\$7,144,722</b>

# Program Expenditures

## (July 1, 2012-June 30, 2014)

Phase I Program Expenditures Report (as of June 30, 2014)					
Project	Budget	Fiscal Year Actuals (Expenditures)			
		Object Code	2012 - 2013	2013 - 2014	Total
<b>Imperial Middle School</b>					
<b>Science Labs</b>					
Total	\$156,477		\$7,675	\$18,982	\$26,657
<b>Campus Entry</b>					
Total	\$142,051		\$8,686	\$156,600	\$165,286
<b>Academy Center</b>					
Total	\$726,685		\$40,582	\$156,289	\$196,871
<b>Classroom Improvements</b>					
Total	\$76,223		\$8,689	\$16,802	\$25,490
<b>Safety &amp; Courtyards</b>					
Total	\$297,029		\$16,344	\$313,675	\$330,020
<b>Imperial Middle School Total</b>	<b>\$1,398,465</b>		<b>\$81,976</b>	<b>\$662,349</b>	<b>\$744,324</b>
<b>Washington Middle School</b>					
<b>Drop-Off</b>					
Total	\$103,457		\$5,034	\$12,675	\$17,709
<b>Classroom Improvements</b>					
Total	\$416,883		\$15,748	\$61,035	\$76,783
<b>Academy Center</b>					
Total	\$743,637		\$25,598	\$179,303	\$204,901
<b>Site Outdoor Lighting</b>					
Total	\$45,504		\$4,953	\$13,392	\$18,344
<b>Campus Entry</b>					
Total	\$136,866		\$3,193	\$122,683	\$125,876
<b>Kitchen Lighting</b>					
Total	\$12,520		\$629	\$10,187	\$10,816
<b>Washington Middle School Total</b>	<b>\$1,458,867</b>		<b>\$55,154</b>	<b>\$399,275</b>	<b>\$454,429</b>

# Program Expenditures (July 1, 2012- June 30, 2014)

Phase I Program Expenditures Report (as of June 30, 2014)					
Project	Budget	Fiscal Year Actuals (Expenditures)			Total
		Object Code	2012 - 2013	2013 - 2014	
<b>Districtwide</b>					
<b>Technology</b>					
Equipment					
Total	\$842,952		\$842,952	\$52,749	\$895,701
Wiring					
Total	\$280,000		\$0	\$77,226	\$77,226
Lease payments					
Total	\$634,000		\$0	\$328,645	\$328,645
Total	\$1,756,952		\$842,952	\$458,619	\$1,301,571
<b>Roofing</b>					
Total	\$863,168		\$509,039	\$336,050	\$845,089
<b>Deferred Maintenance &amp; Energy Management</b>					
Total	\$1,078,935		\$38,700	\$55,599	\$94,299
<b>Districtwide Total</b>	<b>\$3,699,054</b>		<b>\$1,390,691</b>	<b>\$850,268</b>	<b>\$2,240,960</b>
<b>Program Reserve</b>					
Program Reserve	\$588,336				
<b>*GRAND TOTAL</b>	<b>\$7,144,722</b>		<b>\$1,527,821</b>	<b>\$1,911,892</b>	<b>\$3,439,713</b>

**\*Notes:**

1 Total expenditures for Measure "O" and Measure "K" from July 1, 2012 to June 30, 2014 is \$5,496,145. This includes the \$3,439,713 of program expenditures listed above + \$1,505,184 in expenditures related to the lease/purchase of technology + \$551,248 of other non-program related expenses:

- a. Total program expenditures reported above exclude other non-program related expenses (e.g., cost of issuance, county election costs, and other non-program expenses totaling \$551,248)
- b. Total program expenditures reported above exclude \$1,505,184 income and expenditure posting for technology

# The Look Ahead



- Construction at Washington and Imperial Middle schools is targeted to begin during the winter of 2014 and be complete by fall 2015
- The BOC (Bond Oversight Committee) will meet again in February of 2015 to review progress
- 21<sup>st</sup> Century furniture concepts to be chosen and ordered for both middle schools
- Discussion regarding Phase 2 of the Implementation Plan to begin with the Superintendent. The next phase proposes improvements to begin on elementary school sites